

CASE STUDY:
SEACOMBE BOAT RAMP
CLIENT: WELLINGTON SHIRE
LOCATION:
SEACOMBE, VICTORIA



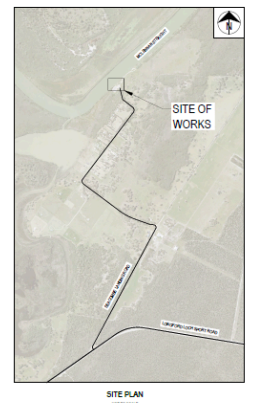
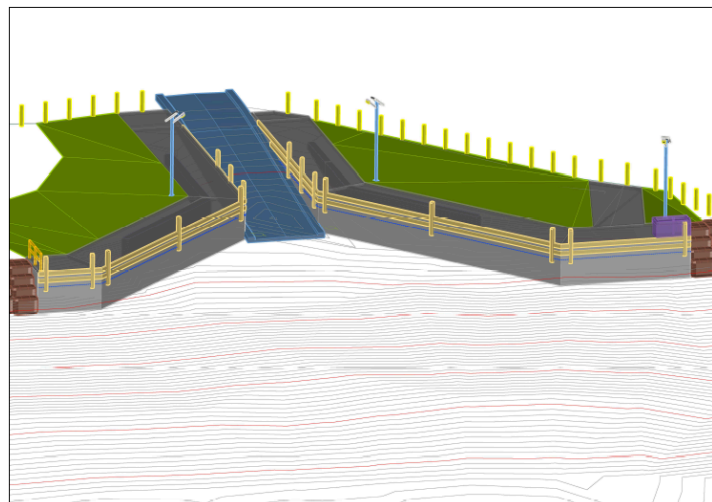
PROJECT BACKGROUND

Carter Marine Group were engaged to complete a significant upgrade to enhance safety, accessibility, and usability for recreational boaters and fishers of the Seacombe Boat Ramp. The ramp is now six-metres-wide, all-tide design, ensuring usability in various tidal conditions. The design and construct tendered project was jointly funded by the Victorian Government's Boating Safety and Facilities Program and the Wellington Shire Council.

SCOPE OF WORK

- In house boat ramp and seawall design to construct
- Demolition and removal of existing ramp
- Seawall and boat ramp piling
- In house manufacture of all precast ramp sections and seawall
- Onsite capping beams to seawall and approach slabs
- Installation of new fish cleaning stations equipped with solar-powered pumps and lighting
- Addition of an accessible platform to accommodate individuals with mobility challenges
- Implementation of new pathways, bollards and lighting to enhance user safety
- Bank stabilisation, including the replacement of existing concrete sheet piling, to prevent erosion and protect the surrounding environment
- Installation of rock beaching at seawall ends
- Prep and seal side road
- Prep and asphalt approach to ramp





*“Seacombe boat ramp is
now better than ever”*

**BETTER BOATING
VICTORIA**

KEY PARTNER:



Wellington Shire Council
wellington.vic.gov.au

**better
boating**
VICTORIA